

JAIVIK CLASSIFYING MILL (JVCM)

Introduction

The JVCM is a pulverizer with classifier utilizing a unique system of internal circulation of dry solids to be pulverized producing finer powder more economically meeting most critical particle size distribution i.e. band width. It is customized to handle very fine grinding requirements like > 250 microns. The mill can be adjusted using online solutions, without shutting down the milling operation. JVCM models are available in different power load and capacity options. The JVCM's versatility and advanced features make a 'fine' choice for your operations.

Working Principle

The JVCM is a uniquely engineered product which uses a system of internal circulation coupled with air to produce a fine powder most efficiently. The Feed material is pneumatically charged into JVCM through the feed inlet of the mill along with the process air. Product enters the grinding zone, where it comes in contact with the face of the rotating hammers, and impacts the material into smaller particles. The air separates fine particles of desired size while regrinding the rest to ensure maximum efficiency.

The Classifying Mill needs positive suction at mill inlets to provide necessary circulation of air through the grinding chamber & the air classifier. The JVCM plant basically consists of three main units; Mill, Dust Collector & Fan. The Mill is realized & guaranteed when used in conjunction with the equipment.



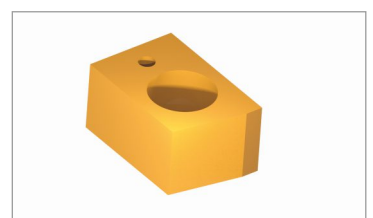
Mill classified by Feed Method

- ▶ **Screw Feed** : For granular/lumpy solids
- ▶ **Air Injection Feed** : Optimises air flow conditions, minimises mills pressure loss
- ▶ **Gravity Feed** : For fine grinding of larger pieces.



Mill classified by Hammer Type

- ▶ **LFS hammer** : Mostly for Fibrous materials
- ▶ **Bar hammer** : for amorphous, abrasive fibrous solids.
- ▶ **Pin Hammer** : for crystalline, non abrasive solids.



Design Features :

- ▶ **Efficient and versatile** : Get the most out of any input.
- ▶ **Steep particle size distribution, sharp classifier cut point** : Instantly adjustable for fine control and finer output
- ▶ **Compact space saving design** : Fits anywhere!
- ▶ **Simple to clean, maintain and operate** : Spend less time on maintenance, more time on operation
- ▶ **Low energy requirement** : Saves bills, and the environment.
- ▶ **Closed circuit grinding with inert gas or conditioned air**
- ▶ **Dust-Free Operation.**



PARAMETER	UNIT	JVCM 100	JVCM 300	JVCM 600	JVCM 1000	JVCM 1500	JVCM 2000
Motor Power (Rotor)	kW	7.5	22	45	75	110	160
Motor Power (Classifier)	kW	0.75	3.75	7.5	11	18.5	37
Motor Power (Feed Screw)	kW	0.37	0.37	0.37	0.75	0.75	1.1
Max Rotor Speed	rpm	7000	4700	3750	2950	2100	1850
Max Classifier Speed	rpm	4500	2920	2650	2400	2400	2200
Maximum Feed Size	mm	15	20	25	30	35	35
Capacity Factor	-	1	2.7	5.4	9	13.5	18
Overall Dimensions- L X W X H – Mill with Screw Feed	mm	1510 x 1100 x 1200	2120 x 1285 x 1300	2500 x 1640 x 1710	2900 x 1750 x 1900	2900 x 1250 x 1800	3350 x 1350 x 2200
Overall Dimensions- L X W X H – Mill with Gravity Feed	m	5.6 x 1.6 x 7.9	6.2 x 2.2 x 8.3	9.5 x 3.1 x 8.9	12 x 4.1 x 10.1	12 x 13.5 x 7	13 x 4 x 8
Total Weight of Mill Assembly with Screw Feed hopper	kg	600	900	2400	2900	3250	9800

Applications

Soya flake, cane sugar, dehydrated vegetables, sodium bicarbonate, soda ash, talc, soft limestone, thermo plastic polymer, turmeric, ginger, pepper, salt, rice, wheat kernel and many more ...

JAIVIK

**JAIVIK FOOD &
RESEARCH PVT. LTD.**

Corporate Office :

Sr. No. 14, Plot No 10, Dhadge Industrial Estate, Nanded Phata,
Sinhagad Road, Pune - 411 041. Maharashtra, India

Registered Office :

S. No 253/1B/3, Khese Park, Near Officers Mess,
Lohegaon, Pune - 411 032. Maharashtra, India

+91 869 800 1992 ✉ sales@jaivikfoods.in 🌐 www.jaivikfoods.in

